



Electrochemical Formaldehyde Sensor

(Model: MQ-E3-CH2O)

User's Manual

Version: 1.2

Valid from: 2014-05-01

Taiyuan Tengxing sensor technology Co., Ltd

Statement

1. The copyright of instructions belong to Taiyuan Tengxing sensor technology Co., Ltd (hereinafter referred to as the Company), nobody is allowed to copy, translate, spread or store without written approval.
2. Thanks for using our product. In order to use the products more smoothly, reduce faults result from inappropriate using, please read the instructions carefully before using and follow the rules suggested strictly. Anyone who don ' t follow the instructions, disassemble or change the internal components without permission will afford the loss.
3. The color, style and size of the product is subject to the object you received.
4. The company follows the idea of scientific and technological progress, make efforts to product-improving and technology-innovating. So we have the right to improve product without prior notice.
5. Please make sure it ' s valid before using the instructions. Any good suggestions from you is welcomed.
6. The instructions should be well kept.

Taiyuan Tengxing sensor technology Co., Ltd

MQ-E3-CH2O Electrochemical Formaldehyde Sensor

MQ-E3-CH2O electrochemical sensor detect gas concentration by measuring current based on the electrochemical principle, which utilizes the electrochemical oxidation process of target gas on the working electrode inside the electrolytic cell, the current produced in electrochemical reaction of the target gas are in direct proportion with its concentration while following Faraday law, then concentration of the gas could be get by measuring value of current.

1. Features

- * Low consumption
- * High precision
- * High sensitivity
- * Wide linear range
- * Good anti-interference ability
- * Excellent repeatability and stability

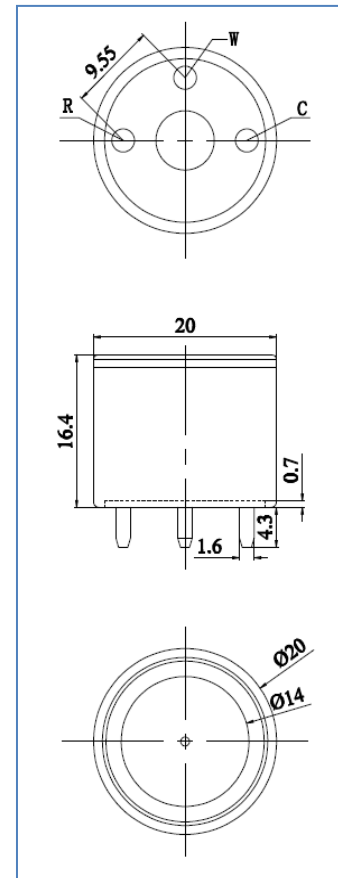
2. Applications

Widely used in industrial and environmental fields

3. Technical Parameter

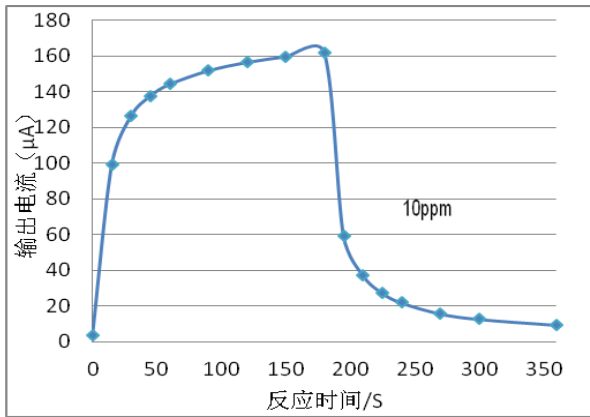
Detection gas	CH ₂ O
Measurement Range	0~10ppm
Max detecting concentration	100ppm
Sensitivity	(11.8±6) μA/ppm
Resolution ratio	0.1ppm
Response time (T ₉₀)	≤90S
Bias voltage	300mV
Load resistance (recommended)	300Ω
Repeatability	<2% output value
Stability (/ month)	<2%
Output Linearity	linear
Zero drift (-20℃~40℃)	-0.03ppm~0.03ppm
Storage temperature	-20℃~50℃
Storage Humidity	15%~90% RH
Pressure range	Standard atmosphere ±10%
Anticipated using life	2 years(in air)

4. External dimension

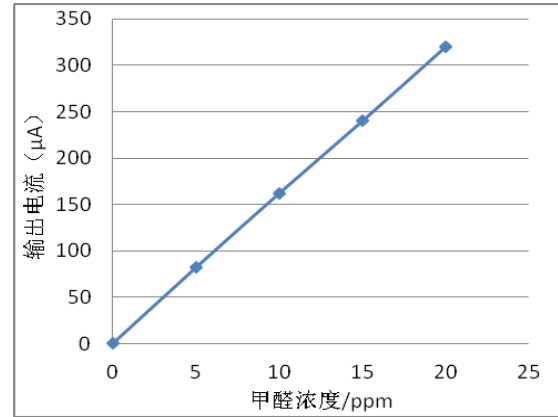


5. Characterization

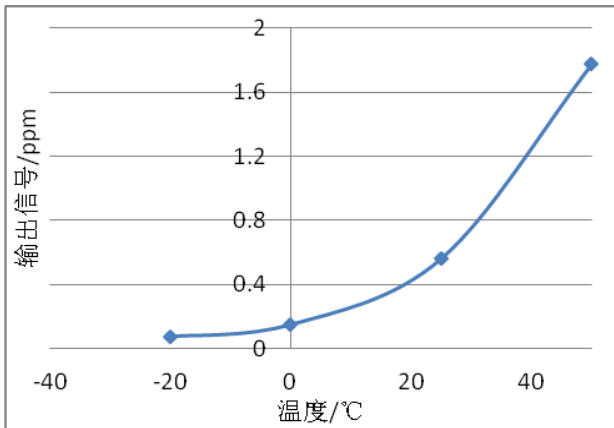
Features of Sensitivity, response and output signal



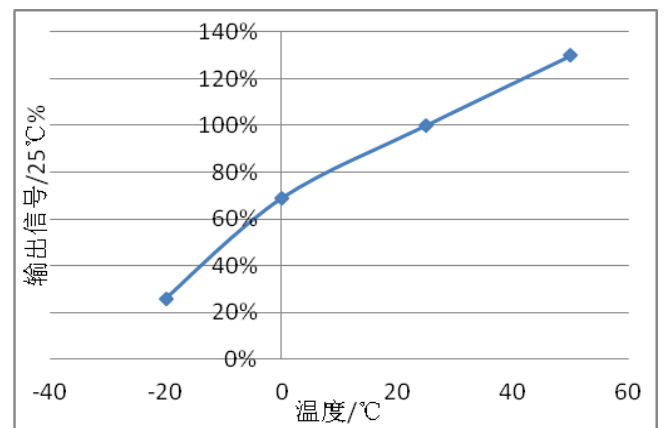
Data graph of concentration linearity features



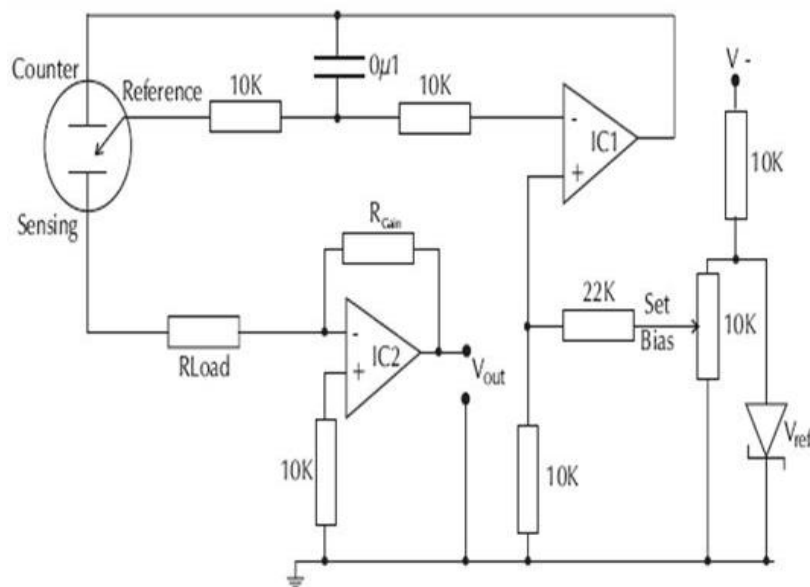
V0 Change upon Variable Temperature



Sensitivity upon variable temperature



6. Basic circuit



7. Anti-Interference:

MQ-E3-CH₂O sensor also responds to other gases besides target gas. Below are the response characteristics of interferential gases

Gas	Concentration	MQ-E3-CH ₂ O
CH ₂ O	1ppm	1ppm
CH ₂ CHCL	100ppm	8ppm
ETO	10ppm	1ppm
(C ₂ H ₅) ₂ O	50ppm	1.5ppm
CH ₃ COOH	50ppm	1ppm
C ₆ H ₆	50ppm	1.5ppm
C ₇ H ₈	50ppm	2.3ppm
C ₈ H ₁₀	50ppm	3ppm
CHCL ₃	50ppm	0.8ppm
CO	200ppm	6ppm
C ₂ H ₅ OH	300ppm	19ppm
H ₂ S	50ppm	7ppm
SO ₂	20ppm	0.7ppm
CL ₂	10ppm	0.07ppm

8. Application Notes:

- Sensor shall Avoid organic solvent, coatings, medicine, oil and high concentration gases;
 - All ME Sensors shall not be encapsulated completely by resin materials, and shall not immerse in oxygen-free environment, otherwise, it will damage the function of sensor;
 - All ME sensors shall not be applied in corrosive gas environment, or the sensor will be damaged;
 - Please test the sensitivity of gas sensors in clean atmosphere;
 - Sensors Shall be avoided to face the gas, which flow directly from front side;
 - To avoid to bend and break of pins;
 - Blowhole of the sensor should not be blocked and polluted, which will cause the sensitivity decrease;
 - Excessive impact or vibration should be avoided;
 - Do not use the sensor when the shell is damaged;
 - It takes some time for the sensor to return to normal state After applied in high concentration gas;
 - Do not take apart the sensor, otherwise electrolyte leakage can cause sensor damage;
 - Working electrode and reference electrode of the sensor shall be in short circuit when stored.;
 - To preheat over 48hs before using and soldering forbidden;
-