



Carbon Monoxide Gas Sensor  
(Model: MQ2-CO-  $\Phi$  14x5)

# Manual

Version: 1.3

Valid from: 2024-07-16

Taiyuan Tengxing sensor technology Co., Ltd

# Statement

1. The copyright of instructions belong to Taiyuan Tengxing sensor technology Co., Ltd(hereinafter referred to as the Company), nobody is allowed to copy, translate, spread or store without written approval.
2. Thanks for using our product. In order to use the products more smoothly, reduce faults result from inappropriate using, please read the instructions carefully before using and follow the rules suggested strictly. Anyone who don ' t follow the instructions, disassemble or change the internal components without permission will afford the loss.
3. The color, style and size of the product is subject to the object you received.
4. The company follows the idea of scientific and technological progress, make efforts to product-improving and technology-innovating. So we have the right to improve product without prior notice.
5. Please make sure it ' s valid before using the instructions. Any good suggestions from you is welcomed.
6. The instructions should be well kept.

Taiyuan Tengxing sensor technology Co., Ltd

---

## MQ2-CO- Φ 14x5 Carbon Monoxide Gas Sensor

### Profile

MQ2--CO-Φ 14x5, fuel cell type sensor, detects gas concentration by measuring current based on the electrochemical principle, which utilizes the electrochemical oxidation process of target gas on the working electrode inside the electrolytic cell, the current produced in electrochemical reaction of the target gas are in direct proportion with its concentration while following Faraday law, then concentration of the gas could be detected by measuring value of current.

### Features

- \* Low consumption
- \* High precision
- \* High sensitivity
- \* Wide linear range
- \* Good anti-interference ability
- \* Excellent repeatability and stability

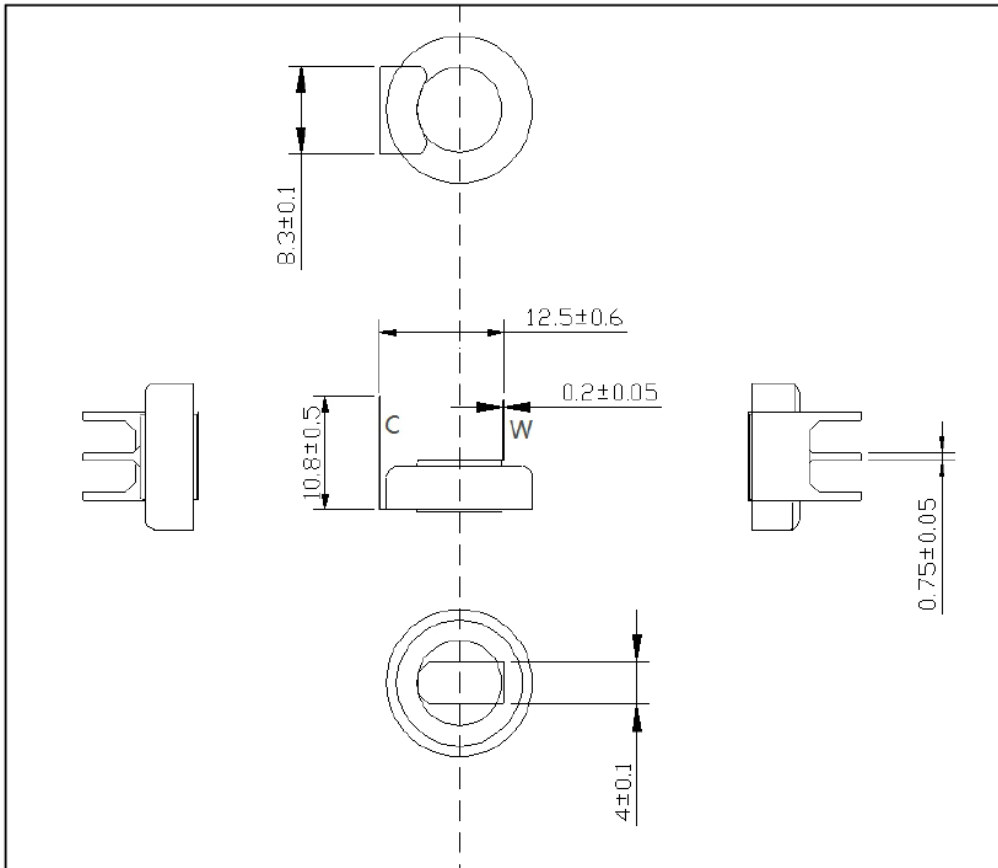


### Main Applications

It is widely used in CO concentration detection in commercial, vehicle, small generator field and other fields.

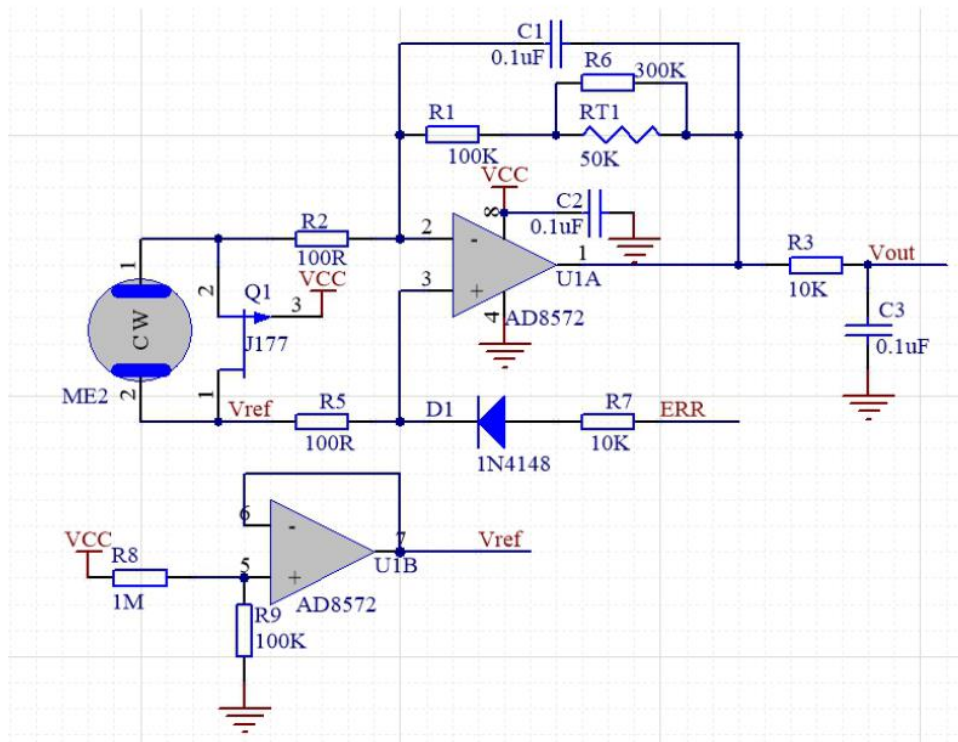
### Technical Parameters table1.

Item	Parameter
Detection gas	CO
Measurement Range	0~5000ppm
Max detecting concentration	10000ppm
Sensitivity	(1.2~3.5)nA/ppm
Resolution ratio	1ppm
Response time(T90)	<30S
Load resistance(recommended)	( 500/1K/2K) Ω
Repeatability	<3% output value
Output Linearity	linear
Zero drift(-20°C~40°C)	≤10ppm
Temperature Range	-10°C~50°C (common) -20°C~60°C (occasionally)
Humidity Range	15%~90%RH
Pressure range	Normal atmosphere± 10%
Anticipated using life	10 years



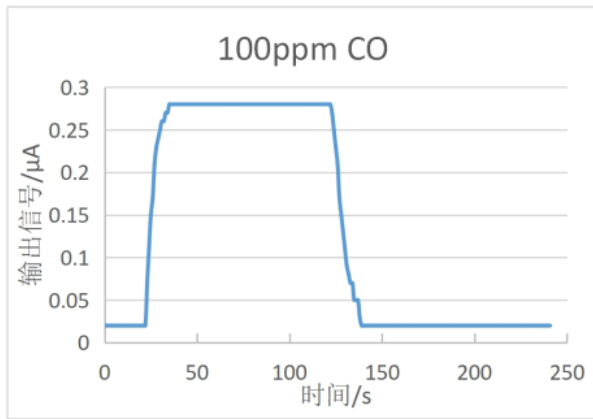
**Fig1.** Sensor structure

**Basic Circuit (test circuit)**

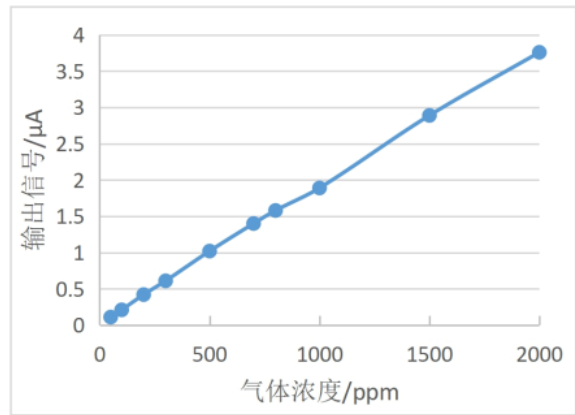


**Fig2.** Recommended circuit

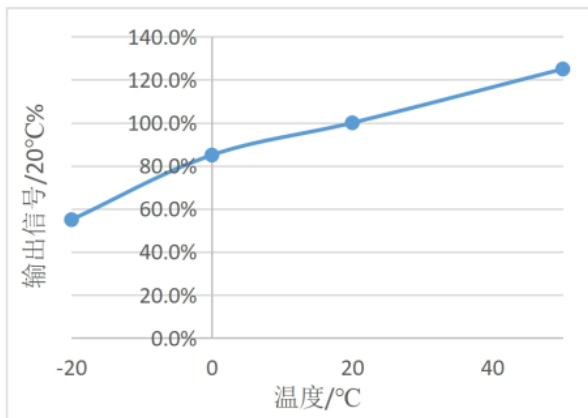
## Characterization



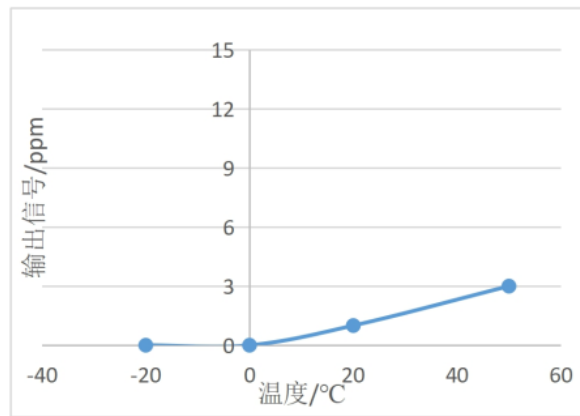
**Fig3. Sensitivity, response and recovery**



**Fig4. Linearity curve**



**Fig5. Output upon variable temperature**



**Fig6. zero point upon variable temperature**

## Cross-sensitivity

MQ2-CO-Φ14x5 sensor also responds to other gases besides CO. Below are the response characteristics of interferential gases for reference.

Gas	Concentration	MQ2-CO-Φ14x5
H <sub>2</sub> S	100ppm	0ppm
C <sub>2</sub> H <sub>4</sub>	100ppm	80ppm
NO	35ppm	6ppm
NO <sub>2</sub>	5ppm	0ppm
SO <sub>2</sub>	20ppm	0.6ppm
NH <sub>3</sub>	50ppm	1ppm
CH <sub>3</sub> CL	5ppm	0ppm
ETO	10ppm	0ppm
C <sub>6</sub> H <sub>6</sub>	100ppm	1.5ppm
C <sub>3</sub> H <sub>6</sub> O	100ppm	3.5ppm
CH <sub>3</sub> OH	200ppm	0ppm

---

## Application Notes:

- The lead can be welded during installation, and the solder can NOT contact the sensor;
  - Before using, power on to aging for more than 48 hours is necessary.
  - Don't disassemble the sensor to avoid the damage caused by electrolyte leakage.
  - Avoid contacting organic solvent (including Silicone rubber and other adhesive), coatings, medicine, oil and high concentration gases.
  - All the electrochemical sensors shall not be encapsulated completely by resin materials, and shall not immerse in non-oxygen environment, otherwise, it will damage the function of sensor
  - All electrochemical sensors shall not be applied in corrosive gas environment, or the sensor will be damaged
  - Zero calibration should be finished in clean air.
  - During test and usage, sensors should avoid the gas inflow vertically
  - The side for inflow can't be choked and polluted.
  - The laminating film above the sensor surface can't be uncovered and damage.
  - Excessive impact or vibration should be avoided
  - It takes some time for the sensor to return to normal state after it is applied in high concentration gas
  - Working electrode and reference electrode of the sensor shall be in short circuit when stored
  - Prohibit to use the hot cement or sealant of which the curing temperature is higher than 80°C to make the capsulation for the sensor.
  - Prohibit storage and usage for long time in alkaline gases with high concentration.
  - Do not use the sensor when the shell is damaged
-